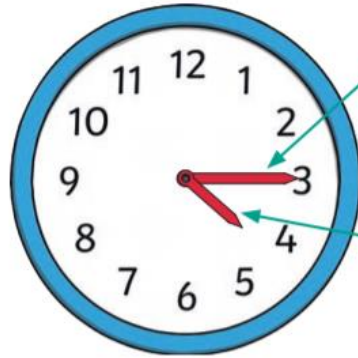




Key Vocabulary

12 hour time
 24 hour time
 roman numerals
 analogue
 digital
 hours
 minutes
 seconds
 days
 weeks
 months
 years
 O' Clock
 half past
 quarter past
 quarter to
 midday
 midnight
 noon
 a.m
 p.m

Analogue and Digital Clocks

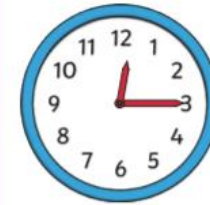


Minute Hand
 The long hand points to the minutes past the hour.

Hour Hand
 The short hand points to the hour. If this hand is pointing between the hours, it is the earlier hour of the two.



twelve o'clock



quarter past twelve

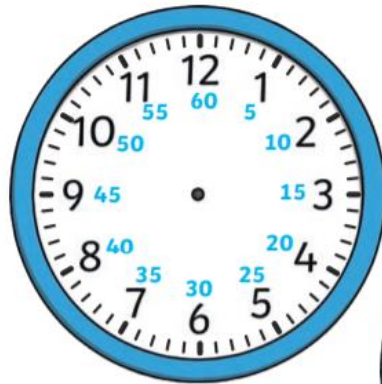


half past twelve



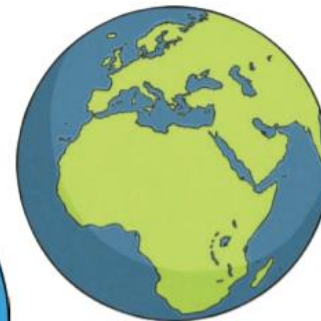
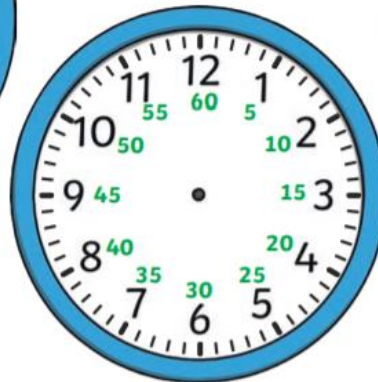
quarter to one

Durations of Time



There are **60 seconds** in a minute.

There are **60 minutes** in an hour.



There are **24 hours** in a day



There are **7 days** in a week.



There are **12 months** in a year.



24 Hour Time

There are 24 hours in a day.



	01:00	1 a.m.	1 o'clock			13:00	1 p.m.	1 o'clock	
	02:00	2 a.m.	2 o'clock			14:00	2 p.m.	2 o'clock	
	03:00	3 a.m.	3 o'clock			15:00	3 p.m.	3 o'clock	
	04:00	4 a.m.	4 o'clock			16:00	4 p.m.	4 o'clock	
	05:00	5 a.m.	5 o'clock			17:00	5 p.m.	5 o'clock	
	06:00	6 a.m.	6 o'clock			18:00	6 p.m.	6 o'clock	
	07:00	7 a.m.	7 o'clock			19:00	7 p.m.	7 o'clock	
	08:00	8 a.m.	8 o'clock			20:00	8 p.m.	8 o'clock	
	09:00	9 a.m.	9 o'clock			21:00	9 p.m.	9 o'clock	
	10:00	10 a.m.	10 o'clock			22:00	10 p.m.	10 o'clock	
	11:00	11 a.m.	11 o'clock			23:00	11 p.m.	11 o'clock	
	12:00	12 p.m.	12 o'clock			00:00	12 a.m.	12 o'clock	