



## **The Downley School Health and Safety Policy**

<b>Issue date:</b>	<b>Summer 2022</b>
<b>Reviewed by:</b>	<b>Senior Management Team</b>
<b>Review frequency:</b>	<b>Annual</b>
<b>Approved by:</b>	<b>FGB</b>

## **Downley School**

Where appropriate, this policy should be read in conjunction with the Buckinghamshire County Council Health and Safety Policy.

### **PART 1: GOVERNING BODY STATEMENT OF INTENT**

Effective health and safety management is integral to delivering our ambition for excellence in education and our performance as a school. We are committed to high standards of health, safety and wellbeing and will take all reasonable steps to meet our responsibilities under the Health and Safety at Work Act, the Management of Health and Safety at Work Regulations, other relevant health and safety legislation and the Regulatory Reform (Fire Safety) Order. Our overall objective is to provide and maintain a safe and healthy environment for our staff and pupils and others with whom we work.

We will achieve this by:

- Taking reasonable steps to make sure that the school is following the employer's policy and procedures e.g. through regular discussion at governance meetings;
- Promoting a sensible and proportionate approach to health and safety, making use of competent health and safety advice when required;
- Working in close partnership with the Headteacher and senior management team to support sensible health and safety management and to challenge as appropriate;
- Developing and maintaining a positive health and safety culture with an emphasis on continually improving our performance;
- Ensuring staff receive adequate information, instruction and training to enable them to carry out their responsibilities competently;
- Ensuring that health and safety management is an integral part of decision making and organisational processes;
- Providing a safe and healthy working environment for our staff, pupils and others working in the school;
- Ensuring safe working methods are in place and providing safe equipment.

- Communicating and consulting with our staff and their trade union representatives;
- Complying with statutory requirements and where possible best practice;
- Investigating and learning the lessons from accidents, incidents, near misses and work-related ill health incidents;
- Monitoring and reviewing systems and preventative measures to make sure they are suitable, sufficient and effective
- Ensuring adequate resources are available to fulfil our health and safety responsibilities and objectives;
- Working with and monitoring our contractors to ensure consistent and comparable health and safety standards.

We recognise that overall responsibility for health and safety lies with all levels of management having direct responsibility for activities and staff under their control. However, all staff have a legal and moral responsibility to take reasonable care for the health and safety of themselves and for others who may be affected by their acts or omissions.

**Name of Headteacher:** Sarah Morgan

**Signature:** *S. Morgan*

**Date:** 23.05.2022

**Name of Chair of Governors:** Sally Perkins

**Signature:** *S. Perkins*

**Date:** 23.05.2022

**Review date:** Autumn Term 2022

## **PART 2: RESPONSIBILITIES AND ORGANISATION**

### **1. INTRODUCTION**

To comply with the Governing Body's Statement of Intent the following responsibilities have been assigned:

### **2. THE GOVERNING BODY**

The Governing Body recognises its responsibilities for ensuring that suitable organisational arrangements are in place for the management and control of health and safety within the school and will endeavour to ensure that the local authority's policy is implemented with regard to its responsibility. In particular, we will ensure that:

- A written policy statement is created and communicated which promotes a positive attitude towards health and safety in staff and pupils;
- Responsibilities for health, safety and welfare are allocated to specific people and those people are informed of these responsibilities;
- A lead governor for health and safety is nominated;
- People have sufficient experience, knowledge and training to perform the tasks required of them;
- Clear procedures are created which assess the risk from hazards and produce safe systems of work;
- Health and safety performance is monitored and targets for improvement are set
- Ensuring that the site and premises is maintained in a safe condition and that sufficient funding is allocated;
- Seeking specialist advice on health and safety which the establishment may not feel competent to deal with;
- The school's health and safety policy is reviewed regularly (at least once annually) and implementing new arrangements where necessary;

### **3. THE HEADTEACHER**

Leadership of health and safety is about managing risk sensibly – not trying to eliminate it altogether. The Headteacher will provide visible leadership to the whole school so that staff feel motivated, supported and empowered to focus on the things that really matter.

The Headteacher is responsible for all staff and activities under their control and will ensure that the requirements of relevant safety policies and procedures are implemented and complied with. In particular, they will:

- Ensure that the school is following Buckinghamshire County Council’s Health and Safety Policy and has effective arrangements for managing the real health and safety risks at the school.
- Be fully committed to the Governing Body’s Statement of Intent, ensuring that a positive health and safety culture is demonstrated and promoted through their leadership.
- Act as the “Responsible Person” under the Fire Safety Order within the School.
- Maintain effective communications with employers, governors, and the school workforce, and give clear information to pupils and visitors, including contractors, regarding the significant risks on site;
- Nominate themselves or a senior manager as the Health and Safety Co-ordinator;
- Undertake all relevant training appropriate to their role and ensure staff are given adequate information, instruction, training and supervision to carry out their duties, paying particular attention to new/inexperienced employees and trainees;
- Attend Swimming Pool Awareness for Headteachers training if the school has its own swimming pool;
- Make sure that staff understand their responsibilities and know how to access support and advice to help them manage risks responsibly.
- Ensure that appropriate risk assessments are undertaken by competent persons and that suitable control measures are taken on a risk basis to manage the health and safety risks to staff and any other people who may be affected by the school’s activities;
- Ensure that risk assessments are undertaken in relation to directly managed staff, for example, job-based risk assessments, stress risk assessments, return to work risk assessments, personal emergency evacuation plans;
- Ensure safe systems of work and procedures are developed and are implemented;
- Ensure prompt action is taken to resolve any situations that may adversely affect the health and safety of staff or other people;
- Ensure that they seek timely assistance and advice where expert help is required from Health and Safety Consultancy team;
- Ensure that all plant and work equipment provided is: selected through a risk assessment process, suitable, properly maintained and subject to all necessary tests and examinations;
- Ensure that accidents and incidents (including near misses and violence and aggression) are reported to County and the HSE (where appropriate) and investigated and the findings acted upon without delay;
- Ensure there are meaningful, effective arrangements in place for consulting employees and their trade union representatives on health and safety matters that affect them;
- Ensure information that may assist safety representatives in their role is provided to them;
- Participate and make recommendations to the Governing Body in relation to external independent audits carried out by the County Council or other bodies
- Report to the Governing Body any health and safety issues which cannot be resolved;

- Ensure the requirements of the Occupier's Liability Acts 1957/1984 are complied with to reduce risk to lawful and unlawful visitors;
- Monitor and review health and safety performance through:
  - termly health and safety inspections of work areas/practices;
  - setting health and safety targets and objectives through appraisals and other supervisory reviews;
  - reviewing incidents and accidents;
  - monitoring commissioned and contracted work for compliance;
  - ensuring that the management of health and safety considers the needs of anyone with a protected characteristic under the Equalities Act;
  - ensuring audit action plans are implemented;
  - reporting to the Governing Body at least annually on the school's health and safety performance

#### **4. LEAD GOVERNOR FOR HEALTH AND SAFETY**

The Lead Governor has the following responsibilities:

- To be fully and visibly committed to the Governing Body's Statement of Intent for health and safety;
- To scrutinise and review health and safety performance;
- To provide support and challenge to the Headteacher and the Governing Body in fulfilling their health and safety responsibilities;
- To ensure in particular that risk assessments of the premises and working practices are carried out and documented;
- To arrange a termly inspection of the school by either themselves or another Governor and to provide a report to the Governing Body.

#### **5. RESPONSIBILITIES OF THE SENIOR LEADERSHIP TEAM (SLT)**

The SLT will support the Headteacher with the overall management of health and safety in the school. This will include:

- Providing leadership by ensuring health and safety is considered as part of every decision;
- Considering the health and safety impact of any new initiatives;
- Informing the Headteacher of any health and safety issues that affect the school;
- Agreeing strategic health and safety initiatives;
- Monitoring the overall implementation of the school's health and safety policy in their areas of control and agreeing the annual health and safety report.

#### **6. HEALTH AND SAFETY COORDINATOR (HEADTEACHER OR A SENIOR MEMBER OF STAFF)**

The Health and Safety Coordinator will take responsibility for:

- management and monitoring of purchasing and contracting procedures to ensure risks are effectively managed;
- advising contractors of site-specific risks and overseeing their activities on site;
- ensuring staff and visitors are aware of the on-site procedures and the precautions to follow;
- accident and incident reporting;
- implementation, monitoring and review of training procedures;
- preparation of reports and returns for the school leadership team

The Health and Safety Coordinator/ Headteacher has the following responsibilities to:

- Attend appropriate health and safety training courses including IOSH Managing Safely and Managing Fire Safety Training to enable them to discharge their duties effectively;
- Ensure that a fire risk assessment is completed by a competent contractor for the school and that it is implemented and reviewed at least annually;
- Promote health and safety matters throughout the school and assisting the Headteacher in the implementation of the County Council's and School's Health and Safety Procedures;
- Ensure the Fire Log and Legionella Log are kept up to date;
- Ensure that the Health and Safety Notice Board is kept up to date;
- Ensure the correct accident, incident and near miss reporting procedures are followed and that, where appropriate, accidents are investigated;
- Arrange termly health and safety inspections and ensuring follow up action is completed and records kept available for audits;
- Ensure appropriate procedures for school visits is followed;
- Participate in any Health and Safety Audits arranged by the County Council;
- Provide health and safety induction training for all staff;
- Provide basic fire awareness training for all staff at least every six months. Refer to training notes section 3.3 Health and Safety Policies and Procedures.
- Keep an up to date record of staff health and safety training;
- Ensure that all statutory inspections are completed and records kept;
- Make provision for the inspection and maintenance of work equipment;
- Ensure that emergency drills and procedures are carried out regularly and monitored for effectiveness and that records are kept;
- Monitor contractors on site and ensuring they consult the Asbestos Log before starting work.
- Coordinate and manage the annual risk assessment process for the school;
- Coordinate performance monitoring processes;

- Manage records of all health and safety activities including management of building fabric and building services in liaison with County and other contractors;
- Advise the Headteacher of situations or activities which are potentially hazardous to the health and safety of staff, pupils and visitors;
- To ensure that staff are adequately instructed in safety and welfare matters about their specific workplace and the school generally.

## **7. TEACHING AND SUPPORT STAFF HOLDING POSITIONS OF SPECIAL RESPONSIBILITY**

This includes Deputy Headteachers, Business Managers and Site Managers

They have the following responsibilities to:

- Apply the school's Health and Safety Policy and the relevant health and safety Codes of Practice to their own department or area of work and be directly responsible to the Headteacher for the application of the health and safety procedures and arrangements;
- Carry out regular health and safety risk assessments of the activities for which they are responsible;
- Checking compliance with job risk assessments and reviewing health and safety performance in staff appraisals/performance management reviews;
- Ensure that all staff they manage are familiar with the relevant health and safety Codes of Practice, for their area of work;
- Resolve health, safety and welfare issues that staff refer to them, or refer to the Headteacher any matters for which they cannot achieve a satisfactory solution within the resources available;
- Carry out regular inspections of their areas of responsibility to ensure that equipment, and activities are safe and record these inspections where required;
- Ensure, so far as is reasonably practicable, the provision of sufficient information, instruction, training and supervision to enable other staff and pupils to avoid hazards and contribute positively to their own health and safety;
- Investigate any accidents that occur within their area of responsibility.

## **8. HEADS OF SUBJECT DEPARTMENTS HAVE THE FOLLOWING SPECIFIC HEALTH AND SAFETY RESPONSIBILITIES:**

Heads of Departments and/or Curriculum Leaders have expertise in their topic areas and are often in the best position to advise or lead on the arrangements for assessing and managing risk in their department.

- The day to day management of health and safety within their department in accordance with the health and safety policy;
- Drawing up and reviewing departmental policies, procedures and risk assessments regularly (at least annually);



- Carrying out regular health and safety monitoring inspections of the department and making reports to the Headteacher where appropriate;
- Ensuring follow up and remedial action is taken following health and safety inspections;
- Arranging for the appropriate subject specific health and safety training to be provided to all staff within the department;
- Passing on health and safety information received to the appropriate people;
- Acting on health and safety reports from above and below in the school hierarchy.
- Report all accidents, defects and dangerous occurrences to the Headteacher and/or Health and Safety Coordinator.

## 9. CLASS TEACHERS

Class teachers are expected to:

- Exercise effective supervision of their pupils, to know the procedures for fire, first aid and other emergencies;
- Follow the particular health and safety measures to be adopted in their own teaching areas as laid down in the relevant Codes of Practice;
- Give clear oral and written instructions and warnings to pupils when necessary;
- Follow safe working procedures;
- Require the use of protective clothing and guards where necessary;
- Make recommendations to their Headteacher or manager regarding equipment and improvements to plant, tools, equipment or machinery;
- Integrate all relevant aspects of safety into the teaching process;
- Report all accidents, defects and dangerous occurrences to their manager.

## 10. SAFETY REPRESENTATIVES

Safety representatives do not have responsibilities under this policy; however, they do have functions as laid down in the Safety Representatives and Safety Committees Regulations.

The Governing Body believes that consulting employees on health and safety matters is important in creating and maintaining a safe and healthy working environment.

## 11. STAFF

All of the school workforce play an important part in sensible health and safety management in schools. Staff involvement makes a vital contribution towards achieving safer and healthier workplaces, and helps develop sensible rather than over cautious approaches.

When developing learning opportunities, staff should focus on controlling the real risks, not eliminating all risks. Health and safety is about doing things safely, not finding reasons not to do them.

In particular staff must:

- comply with the school's health and safety policy and procedures at all times;
- take reasonable care for the health and safety of themselves and others when undertaking their work, for example;
  - check classrooms/work areas are safe;
  - check equipment is safe before use;
  - ensure safe working procedures are followed;
  - Ensure two members of staff are present in the event of needing to safeguard a child.
- co-operate with managers in complying with relevant health and safety safe systems of work and procedures;
- use all work equipment and substances in accordance with instruction, training and information received;
- wear, use, store, maintain and replace personal protective equipment as appropriate;
- not intentionally or recklessly interfere with or misuse anything provided in the interests of health, safety and welfare;
- take part in and contribute to health and safety inspections, risk assessments etc. as appropriate;
- report
  - accidents, incidents of violence and aggression and near misses;
  - ill health caused by work activities;
  - defective equipment or premises, hazardous situations and other health and safety concerns;
  - report immediately to their Headteacher/Line Manager any serious or immediate danger.

## 12. PUPILS

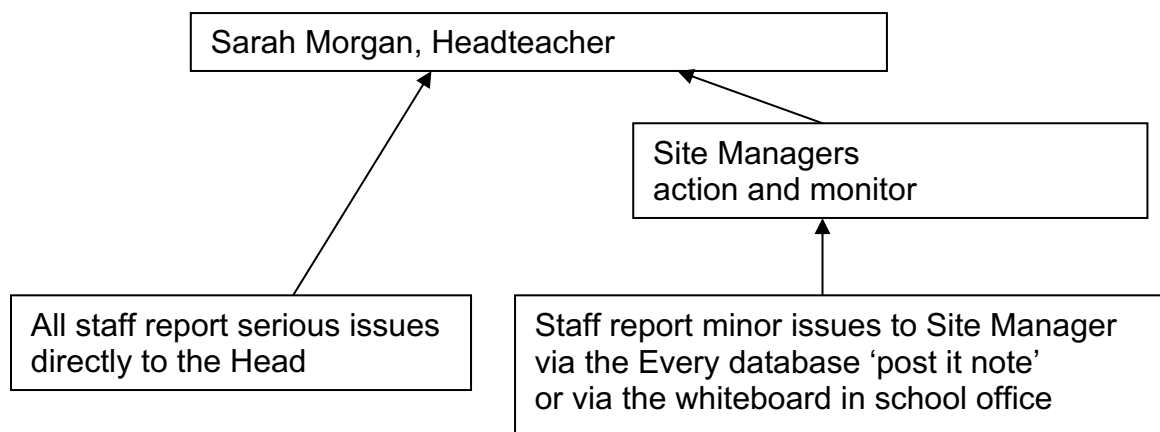
Pupils, allowing for their age and aptitude, are expected to:

- take personal responsibility for the health and safety of themselves and others
- observe standards of dress consistent with safety and/or hygiene

- observe all the health and safety rules of the school and in particular the instructions of staff given in an emergency
- use and not wilfully misuse, neglect or interfere with things provided for their health and safety

### Safety Representatives

Safety representatives do not have responsibilities under this policy; however, they do have functions as laid down in the Safety Representatives and Safety Committees Regulations.



### **PART 3: PROCEDURES AND ARRANGEMENTS**

The following procedures and arrangements have been adopted to ensure compliance with the Governing Body's Statement of Intent.

#### **1. LEAD GOVERNOR FOR HEALTH AND SAFETY**

The lead governor with responsibility for scrutiny of health and safety performance is Sally Perkins.

#### **2. AUDIT, REVIEW, PERFORMANCE MEASUREMENT AND ACTION PLAN**

Sarah Morgan, Headteacher is responsible for reviewing the School's Health and Safety Policy and ensuring all staff signed a list to acknowledge that they have read and understood the policy.

The site manager is responsible for ensuring the implementation of recommendations of any health and safety audit reports carried out by the County Council

#### **3. CATERING**

The School Business Manager is responsible for registering the food premises with the local Environmental Health Officer, District Council;

Sarah Morgan is responsible for:

- monitoring the preparation of food and the nutritional standards of meals;
- the maintenance of satisfactory hygiene standards;
- ensuring that temperature of the refrigerator and freezer are monitored and logged;
- ensuring an adequate schedule of deep cleaning is undertaken.

#### **4. CONSULTATION WITH EMPLOYEES**

Any employee appointed as a safety representative by their Association or trade union will be offered suitable facilities to undertake their work.

Safety representatives are Sarah Morgan and Rob Colley.

For further guidance refer to section 1.2 health and safety policies and procedures [https://schoolsweb.buckscc.gov.uk/health-and-safety/health\\_and\\_safety\\_policies/](https://schoolsweb.buckscc.gov.uk/health-and-safety/health_and_safety_policies/)

#### **5. CONTRACTORS - SELECTION AND MANAGEMENT**

Contractors are selected and managed following guidance and documentation in section 9.4 health and safety policies and procedures

[https://schoolsweb.buckscc.gov.uk/health-and-safety/health\\_and\\_safety\\_policies/](https://schoolsweb.buckscc.gov.uk/health-and-safety/health_and_safety_policies/)

## 6. EDUCATIONAL VISITS

Sarah Morgan, Headteacher is responsible for ensuring that educational visits, including residential visits and any school-led adventure activities, will be risk assessed and organised following guidance produced by the County's Education Visits Co-ordinator.

## 7. ENFORCING AUTHORITY VISITS

Sarah Morgan, Headteacher is responsible for implementing any recommendations following a visit by the Enforcing Authorities and reporting matters requiring authorisation/action to the Governing Body or LA.

## 8. FIRE AND OTHER EMERGENCY ARRANGEMENTS

Sarah Morgan, Headteacher is responsible for:

- ensuring fire risk assessment is undertaken by a competent contractor and regularly reviewed;
- developing local fire safety procedures to ensure
  - personal emergency evacuation plans (PEEPS) are carried out for people with disabilities, i.e. staff, pupils, visitors;
  - fire evacuation drills are carried out at least termly;
  - a roll call is taken at the Assembly Point;
  - that no-one attempts to re-enter the building until the all clear is given by the emergency services;
  - firefighting and fire detection equipment is serviced and maintained annually;
  - regular reminders to staff on fire safety.

Andy Partridge is responsible for:

- maintaining the Fire Log;
- checking daily that evacuation routes remain clear and that final exit doors are openable;
- checking firefighting equipment annually remains in a useable condition, e.g. fire extinguishers, fire blankets;
- testing the alarms every week from different call points and recording the tests in the Fire Log;

- testing the emergency lighting at appropriate intervals

Emergency procedures covering a range of hazardous situations which may arise in the establishment can be found in the following locations:

Type of emergency procedure	Location(s)
Fire Evacuation Procedure	All Classrooms
Bomb Alert	School Office
Gas Leak	School Office
Electrical Fault	School Office
Water	School Office
Storm or Flood Damage	School Office
Lockdowns	All Classrooms

The person who discovers the emergency will raise the alarm immediately by the most appropriate means and ensure that the Headteacher, Deputy Headteacher or in their absence, a member of the Senior Leadership Team is informed immediately and that where appropriate the emergency services are summoned. A member of the Senior Leadership Team will liaise with the emergency services when they arrive and take advice from them.

**Note: The priorities are as follows:**

- to ensure the safety of all people, their removal from danger, their care and the application of first aid and medical treatment where appropriate;
- to call the emergency services when appropriate;
- to safeguard the premises and equipment, if this is possible without putting persons at risk.

## 9. FIRST AID

First aid boxes and first aid record books are kept at: **Classrooms/hall/medical room**

Travelling first aid boxes are kept at: **Bum bags for trips in first aid room/black bag for off-site sports and residential trips stored in first aid room.**

Mandy Aitken is responsible for making a termly check of the contents of all first aid boxes.

The nearest medical centre/NHS GP Priory Surgery, 24 – 26 Priory Ave, High Wycombe – 01494 448132.

The nearest minor injuries is Wycombe Hospital, Queen Alexandra Road, High Wycombe 01494 – 526161 – Open 8am – 8pm

The nearest hospital with accident and emergency facilities is Stoke Mandeville Hospital, Aylesbury, Bucks/Wexham Park, Slough/Royal Berks, Reading

The following employees are qualified to provide first aid: including Early Years first aid

<b>Name of Employee</b>	<b>Job Title</b>	<b>Qualification</b>
Mandy Aitken	HLTA	First Aid at Work Supporting Children with Medical Needs First Aid at Work
Vicki Ghiotti	Administrative Assistant	First Aid at Work Supporting Children with Medical Needs First Aid at Work from 14.07.22
Katie Nash	Teacher	Paediatric First Aid
Yvonne Zulu	HLTA	Paediatric First Aid
Bev Broadway	MDS	Paediatric First Aid
Tanzilla Ramzan	HLTA	Paediatric First Aid
Julia Howarth	Learning Outside the Classroom Lead	Paediatric First Aid Forest School First Aid
Mary McGann	HLTA	Paediatric First Aid
Iwonka Szczypoir	TA	First Aid
Margret Green	TA	First Aid
Tayab Adham	TA	First Aid
Penny McLain-Smith	TA	First Aid
Sam Hooper	PPA Teacher (Friday)	Frist Aid
Sam Dashper	Administrative Assistant	First Aid
Tony Rutland	MDS/Caretaker	First Aid
Moline Ashby	MDS	First Aid
Andrea Vaughan	MDS	First Aid
Mrs Baker	MDS	First Aid

For further guidance refer to section 3.2 health and safety policies and procedures

[https://schoolsweb.buckscc.gov.uk/health-and-safety/health\\_and\\_safety\\_policies/](https://schoolsweb.buckscc.gov.uk/health-and-safety/health_and_safety_policies/)

## **10. HEALTH AND WELL-BEING**

Sarah Morgan is responsible for monitoring absence owing to stress related illness and promoting wellbeing

For further guidance refer to section 8.4 health and safety policies and procedures  
[https://schoolsweb.buckscc.gov.uk/health-and-safety/health\\_and\\_safety\\_policies/](https://schoolsweb.buckscc.gov.uk/health-and-safety/health_and_safety_policies/)

### **11.1 Occupational Health**

Access to occupational health services is through PAM Group via HR

### **11.2 Employees Assistance Programme**

Employees Assistance is provided by PAM Assist and is a completely independent and confidential personal support service, which is available 365 days 24 hours;  
Freephone number: 0800 882 4102

## **11. INCIDENT REPORTING AND INVESTIGATION**

Leah Ovens is responsible for reporting accidents, incidents and near misses, as soon after the event, as possible using the Assessnet on-line recording system.

Sarah Morgan, Headteacher is responsible for contacting the Health and Safety Team immediately to report a serious incident (accident, incident (physical assault, threat, verbal abuse) or near miss). Where appropriate/practicable a Health and Safety Adviser will visit the school the same day to provide support and investigate the incident. Telephone 01296 674412 or email [healthandsafety@buckcc.gov.uk](mailto:healthandsafety@buckcc.gov.uk)

Minor injuries to non-employees (i.e. pupils and visitors) where first aid is given will be reported on the First Aid Record of Treatment form. These forms are kept in the medical room.

Sarah Morgan, Headteacher will investigate all incidents and act on findings to prevent a reoccurrence or similar accident/incident. Where accidents are found to be caused by faulty plant, equipment, premises or unsafe systems of work action must be taken to remove or isolate the hazard and warn people until the necessary modifications or repairs can be made.

For further guidance refer to section 3.1 health and safety policies and procedures  
[https://schoolsweb.buckscc.gov.uk/health-and-safety/health\\_and\\_safety\\_policies/](https://schoolsweb.buckscc.gov.uk/health-and-safety/health_and_safety_policies/)



## 12. INSPECTIONS

Routine inspections of the premises to ensure safe working practices are being followed will be carried out by Sarah Morgan and the site manager.

Inspections of individual departments and specific work areas will be carried out by Heads of Department or nominated staff.

Formal health and safety inspections will be carried out termly with the Health and Safety Governor.

For further guidance and information refer to section 2.5 and 2.5a health and safety policies and procedures

[https://schoolsweb.buckscc.gov.uk/health-and-safety/health\\_and\\_safety\\_policies/](https://schoolsweb.buckscc.gov.uk/health-and-safety/health_and_safety_policies/)

## 13. INFORMATION, INSTRUCTION AND TRAINING

### 14.1 INFORMATION AND ADVICE

A [Health and Safety Law Poster](#) is displayed at: the staff room.

Health and safety advice is available from the Health and Safety Team via the HR Service Desk.  
Telephone: 01296 382233                      E-mail: [hrservicedesk@buckinghamshire.gov.uk](mailto:hrservicedesk@buckinghamshire.gov.uk)

### 14.2 HEALTH AND SAFETY TRAINING:

#### 14.2.1 Induction

Health and safety induction training will be provided for all new employees and for work experience placement students by Victoria Willmot or Sarah Morgan which covers the following guidance and documentation that is available from [https://schoolsweb.buckscc.gov.uk/health-and-safety/health\\_and\\_safety\\_policies/](https://schoolsweb.buckscc.gov.uk/health-and-safety/health_and_safety_policies/)

*BCC Health and Safety Policy  
Codes of Safe Practice and Guidance  
Premises Asbestos Log  
Job Based Risk Assessment and other  
appropriate assessments  
Accident Reporting Arrangements  
Safe Use of Work Equipment*

*School Health and Safety Policy  
Education Visits Policy Document  
Premises Legionella Log  
Fire and other Emergency Arrangements  
First Aid Arrangements  
Procedures for Hazardous Substances*

*Good Housekeeping, Waste Disposal and Cleaning Arrangements*  
*Special Hazards/Responsibilities Associated with their Work Activity*  
*Safe Practice in School Swimming*

*Hazard Reporting and Maintenance Procedures*  
*Special Needs of Young Employees (e.g. Work Experience Placements)*

### 14.2.2 Training Records and Training Needs Identification

The Deputy Head(s) / School Business Manager are responsible for identifying training and refresher training needs and keeping health and safety training records. Staff and governors named below have received or will receive health and safety training in the following areas (amend as appropriate):

<i>Asbestos Awareness</i>	<i>IOSH Working Safely</i>	<i>Personal Safety of Employees</i>
<i>COSHH Awareness</i>	<i>Legionella</i>	<i>Pool Carers Course/Refresher</i>
<i>Emergency First Aid at Work</i>	<i>Load Risk Assessor for Moving and Handling</i>	<i>Pool Safety Awareness for Headteachers</i>
<i>Fire Safety Training</i>	<i>Manual Handling (Loads)</i>	<i>Safe Playground Inspection</i>
<i>First Aid at Work</i>	<i>Minibus Training (County)</i>	<i>Supporting Pupils with Medical Conditions (formerly Managing Medicines)</i>
<i>Food Safety in Catering</i>	<i>Paediatric Moving and Handling with/without hoists</i>	<i>Team Teach training</i>
<i>Governor's Role in Health and Safety</i>	<i>Paediatric First Aid (for schools with children below 5)</i>	<i>Visual Tree training</i>
<i>IOSH Managing Safely/Refresher</i>	<i>PAT Testing</i>	<i>Working at Height</i>

### 14.2.3 Strategic Health and Safety Management and Premises Management Training

#### *Specific course for Governors*

- The Governor Role for Health and Safety (provided by Governor Services, BLT)

#### *Courses for Senior Leadership Teams*

- Asbestos Awareness (Headteachers/Health and Safety Coordinators: N/A)
- Fire safety training (for Headteachers/Health and Safety Coordinators): Sarah Morgan
- IOSH Managing Safely/Managing Safely Refresher 4 day/1 day course (for Headteachers/Health and Safety Coordinators: Sarah Morgan)

- Legionella Training (Headteachers/Health and Safety Coordinators: Andy Partridge)
- Managing the Personal Safety of Staff: Sarah Morgan
- Pool Safety Awareness for Headteachers with control of Swimming Pools: N/A

#### **14.2.4 Curriculum/Subject Specific Health and Safety Training**

##### **Primary and Secondary PE and School Sport**

- All Swim England School Swimming Course for appropriate staff. Contact is Mandy Carey at [swimming@ahs.bucks.sch.uk](mailto:swimming@ahs.bucks.sch.uk) or visit the BCC Swimming SchoolsWeb page at [https://schoolsweb.buckscc.gov.uk/curriculum-learning/swimming/.](https://schoolsweb.buckscc.gov.uk/curriculum-learning/swimming/))

##### **Primary Food Technology and Occasional Catering Events**

#### **14.2.5 Occupational Risks**

- Buckinghamshire County Council Minibus driver training: N/A
- Emergency First Aid at Work: Mandy Aitken, Victoria Ghiotti
- Evacuation Chair training: N/A
- Fire Warden Training: Sarah Morgan, Victoria Ghiotti, Sam Dashper, Leah Ovens, Andy Partridge, Julia Howarth, Mary McGann and Lyn Wilding
- First Aid at Work: Mandy Aitken, Victoria Ghiotti
- First Aid for Schools: See previous list
- **Load Risk Assessor for Moving and Handling of Pupils with Disabilities: Sukh Colebourne**
- Paediatric First Aid (for schools with children up to age 5): See previous list
- Paediatric Moving and Handling training with/without hoists: Sarah Winter, Tayab Adham, Mary McGann, Sukh Colebourne
- Personal Safety: Sarah Morgan
- Supporting Pupils with Medical Conditions (includes Managing Medicines): Mandy Aitken/Vicki Ghiotti from 14.07.22
- Team Teach training: Victoria Willmot,

#### **14.2.6 Caretaking/Site Management**

- Asbestos Awareness: There is no Asbestos the building was built in 2000.
- Buckinghamshire County Council Minibus driver training: N/A
- COSHH Health and Safety Workshop: Leah Ovens, Office Manager

- Institute of Sport and Recreation Management (ISRM) Pool Plant Carers/Operators Certificate: N/A
- IOSH Working Safely course – a 1 day basic health and safety course: Andy Partridge, Caretaker
- Legionella: Andy Partridge, Caretaker
- Manual Handling: Andy Partridge, Caretaker
- Personal Safety: Sarah Morgan
- Safe Playground Inspection: Andy Partridge, Caretaker
- Visual Tree Assessment: Andy Partridge, Caretaker
- Working at Height: Pete Andy Partridge, Caretaker

#### **14. LEGIONELLA**

Andy Partridge: Caretaker is the Premises Responsible Person for the management of Legionella

Andy Partridge, Caretaker is the Nominated Legionella Controller who has been trained to be responsible for checking water temperatures and flushing appropriate outlets as part of the Legionella programme

For further guidance refer to section 4.4 health and safety policies and procedures On Schools Web.

#### **15. LETTINGS**

Leah Ovens, Office Manager is responsible for co-ordinating lettings of the premises and for giving health and safety including emergency information to hirers.

#### **16. NOISE**

Any employee concerned about the noise levels at work should report the matter to Sarah Morgan, Headteacher who will arrange for remedial action or for an assessment to be made by the Health and Safety Team or a specialist contractor.

For further guidance refer to section 9.3 health and safety policies and procedures [https://schoolsweb.buckscc.gov.uk/health-and-safety/health\\_and\\_safety\\_policies/](https://schoolsweb.buckscc.gov.uk/health-and-safety/health_and_safety_policies/)

#### **17. OUTDOOR PLAY EQUIPMENT**

Andy Partridge, Caretaker is responsible for ensuring outdoor play equipment and safety surfaces is

- regularly inspected by person who has attended Safe Playground Inspection course;
- inspected and maintained annually by a competent contractor;
- repaired or taken out of use, as required.

Andy Partridge, Caretaker is responsible for inspecting the equipment and safety surfacing weekly.

Sarah Morgan is responsible for ensuring outdoor play equipment is adequately supervised when in use.

For further guidance refer to section 10.7 health and safety policies

[https://schoolsweb.buckscc.gov.uk/health-and-safety/health\\_and\\_safety\\_policies/](https://schoolsweb.buckscc.gov.uk/health-and-safety/health_and_safety_policies/)

## 19. ANIMALS ON SITE

Staff must adhere to the following cleaning health and safety guidelines:

- Appropriate personal protective equipment – gloves, apron, brush, etc must be used. Safety instructions on the cleaning products must be followed. All cleaning products will be provided and will adhere to COSHH regulations.
- Legionella checks will be carried out monthly. The temperature for hot and cold taps is tested and must comply with regulation – under 20 degrees. C for cold water and over 50 degrees C for hot.
- Animals are effectively contained in order to protect staff, pupils and visitors. Containment takes the form of a double fenced enclosure, which is locked. The enclosures are designed, constructed and maintained to avoid escape.
- Children should never enter the enclosures unsupervised by an adult and should not pick the animals up.
- All staff and pupils will be trained in safety.
- Hand gel stations and handwashing stations are placed immediately outside the enclosures. Children are instructed to wash their hands immediately after contact with the animals.

## 20. PERSONAL PROTECTIVE EQUIPMENT (PPE)

Suitable Personal Protective Equipment (PPE) goggles, gloves, hearing protection, PPE for animal care, etc will be provided free of charge, where identified as necessary by a risk assessment.

All employees are responsible for informing Sarah Morgan, Headteacher, when they become aware of a need to repair or replace PPE, which they use.

For further guidance refer to section 11.1 health and safety policies

[https://schoolsweb.buckscc.gov.uk/health-and-safety/health\\_and\\_safety\\_policies/](https://schoolsweb.buckscc.gov.uk/health-and-safety/health_and_safety_policies/)

### **20.1 Respiratory Protective Equipment**

Sarah Morgan is responsible for the provision, training in use, safe storage and replacement of respiratory protective equipment.

Sarah Morgan will ensure someone is authorised and trained to use respiratory protective equipment before use.

For further guidance refer to section 11.1 health and safety policies

[https://schoolsweb.buckscc.gov.uk/health-and-safety/health\\_and\\_safety\\_policies/](https://schoolsweb.buckscc.gov.uk/health-and-safety/health_and_safety_policies/)

## **21. PORTABLE ELECTRICAL APPLIANCES**

Andy Partridge, Caretaker is responsible for ensuring that portable electrical appliance testing is carried out at the frequencies in section 10.3 health and safety policies and procedures

[https://schoolsweb.buckscc.gov.uk/health-and-safety/health\\_and\\_safety\\_policies/](https://schoolsweb.buckscc.gov.uk/health-and-safety/health_and_safety_policies/)

Staff should not bring electrical equipment onto the school site unless they have authorisation and the appliances have been portable appliance tested.

## **22. RISK ASSESSMENT**

### **22.1 GENERAL RISK ASSESSMENT**

General risk assessment will be coordinated by Sarah Morgan, Headteacher following guidance and documentation in section 2.1 health and safety policies and procedures

[https://schoolsweb.buckscc.gov.uk/health-and-safety/health\\_and\\_safety\\_policies/](https://schoolsweb.buckscc.gov.uk/health-and-safety/health_and_safety_policies/)

They will be responsible for ensuring risk assessment relating to jobs, locations, work equipment, chemicals and activities are produced by appropriate persons and appropriately communicated to staff and ensuring the actions required are implemented.

### **22.2 FIRE RISK ASSESSMENT**

Sarah Morgan, Headteacher is the Responsible Person under the Fire Safety Reform Order;

Sarah Morgan Headteacher, is the Competent Person (must hold an IOSH Managing Safely

Certificate (or equivalent) and attended Fire Safety training) who is responsible for:

- ensuring a fire risk assessment is carried at regular intervals by a competent Fire Risk Assessor contractor;
- regularly reviewing the fire risk assessment;

For further guidance refer to section 3.3 health and safety policies and procedures  
[https://schoolsweb.buckscc.gov.uk/health-and-safety/health\\_and\\_safety\\_policies/](https://schoolsweb.buckscc.gov.uk/health-and-safety/health_and_safety_policies/)

### **22.3 MANUAL HANDLING RISK ASSESSMENTS (LOADS)**

Manual handling risk assessments will be carried out by Pete Brinkworth following guidance and documentation in section 5.2 health and safety policies and procedures

[https://schoolsweb.buckscc.gov.uk/health-and-safety/health\\_and\\_safety\\_policies/](https://schoolsweb.buckscc.gov.uk/health-and-safety/health_and_safety_policies/)

They will be responsible for ensuring any actions required are implemented, including training needs.

### **22.4 MOVING AND HANDLING RISK ASSESSMENTS (PEOPLE)**

Moving and handling risk assessments will be carried out by Sarah Morgan following guidance and documentation in section 5.1 health and safety policies and procedures

[https://schoolsweb.buckscc.gov.uk/health-and-safety/health\\_and\\_safety\\_policies/](https://schoolsweb.buckscc.gov.uk/health-and-safety/health_and_safety_policies/)

They will be responsible for ensuring:

- assessments are regularly reviewed by an appropriate person and actions required are implemented;
- appropriate people attend
  - Paediatric Moving and Handling training/refresher training annually;
  - Load Risk Assessor training/refresher training annually

### **22.5 COMPUTERS AND WORKSTATION ASSESSMENTS**

Sarah Morgan, Headteacher has identified that all staff are regular users of display screen equipment. Staff undertake regular training on how to use display screen equipment safely. In addition, advice signs have been placed around school. Staff are entitled to a regular eye test and spectacles if recommended by the optician for DSE use

For further guidance refer to section 6.1 health and safety policies and procedures  
[https://schoolsweb.buckscc.gov.uk/health-and-safety/health\\_and\\_safety\\_policies/](https://schoolsweb.buckscc.gov.uk/health-and-safety/health_and_safety_policies/)

## **22.6 VIOLENCE AND AGGRESSION TO STAFF**

Assessments of the risks of violence and aggression to staff will be carried out Sarah Morgan following guidance and documentation in section 7.1 health and safety policies and procedures [https://schoolsweb.buckscc.gov.uk/health-and-safety/health\\_and\\_safety\\_policies/](https://schoolsweb.buckscc.gov.uk/health-and-safety/health_and_safety_policies/)

## **22.7 RISK ASSESSMENTS OF CURRICULUM ACTIVITIES**

Risk Assessments for curriculum activities will be carried out by relevant Heads of Department/Heads of Faculty using guidance from Bucks Grid for Learning, CLEAPSS, Association for Science Education (ASE), and Association for Physical Education (afPE), BCC Health and Safety Policies and other recognised sources of competent advice

## **22.8 RISK ASSESSMENTS FOR HAZARDOUS SUBSTANCES**

Leah Ovens & Andy Partridge are responsible for:

- ensuring an inventory is kept of hazardous substances:
- COSHH data sheets are available and risk assessments are produced and regularly reviewed by appropriate persons for Science, Design Technology, Caretaking and Cleaning, Catering, Grounds Maintenance;
- ensuring that the assessments have been communicated to staff and ensuring the actions required including provision of training are implemented.

Inventories of hazardous substances used in the school are maintained by the following employees at the locations specified:

- |                             |                            |
|-----------------------------|----------------------------|
| • Science                   | Mrs Morgan, Headteacher    |
| • Design Technology         | Mrs Morgan, Headteacher    |
| • Art and Design            | Mrs Morgan, Headteacher    |
| • Caretaking and Cleaning   | Leah Ovens, Office Manager |
| • Swimming Pool Maintenance | Not applicable             |
| • Catering                  | Innovate                   |
| • Grounds Maintenance       | Buckland Landscapes        |

Andy Partridge is responsible for ensuring that local exhaust ventilation (LEV) (fume cupboards, dust extraction equipment on woodworking machines etc) is examined annually and tested by a competent contractor

For further guidance refer to section 4.1 health and safety policies and procedures [https://schoolsweb.buckscc.gov.uk/health-and-safety/health\\_and\\_safety\\_policies/](https://schoolsweb.buckscc.gov.uk/health-and-safety/health_and_safety_policies/)



## **23. SAFE PLANT AND WORK EQUIPMENT**

Plant and equipment will be inspected, maintained and, where necessary, tested by appropriate contractors appointed by the Governing Body /County

Any problems or defects regarding plant and equipment should be reported to Pete Brinkworth.

The following equipment has been identified as likely to involve a specific risk to health and safety and its use, inspection and repair is therefore restricted to employees who have been appropriately trained.

### **23.1 CARETAKING AND CLEANING EQUIPMENT**

Andy Partridge, Caretaker is responsible for ensuring that

- caretaking and cleaning equipment is regularly inspected and maintained; this includes powered cleaning equipment, power and hand tools

Roz Critchlow is responsible for ensuring that

- users/operators are trained and supervised;

Andy Partridge, Caretaker has been authorised and trained to use caretaking and cleaning equipment.

For further guidance refer to section 9.15

[https://schoolsweb.buckscc.gov.uk/health-and-safety/health\\_and\\_safety\\_policies/](https://schoolsweb.buckscc.gov.uk/health-and-safety/health_and_safety_policies/)

### **23.2 CATERING EQUIPMENT (*dough mixers, slicing machines, potato peelers etc*)**

Andy Partridge is responsible for ensuring that

- catering equipment is regularly inspected and maintained;
- users/operators are trained and supervised;

For further guidance refer to section 9.9 health and safety policies and procedures

[https://schoolsweb.buckscc.gov.uk/health-and-safety/health\\_and\\_safety\\_policies/](https://schoolsweb.buckscc.gov.uk/health-and-safety/health_and_safety_policies/)

### **23.3 GAS EQUIPMENT**

Andy Partridge, caretaker is responsible for ensuring that

- gas equipment is serviced and maintained annually;

For further guidance refer to section 10.9 health and safety policies and procedures  
[https://schoolsweb.buckscc.gov.uk/health-and-safety/health\\_and\\_safety\\_policies/](https://schoolsweb.buckscc.gov.uk/health-and-safety/health_and_safety_policies/)

### **23.4 GROUNDS MAINTENANCE EQUIPMENT**

Andy Partridge, caretaker is responsible for ensuring that

- grounds maintenance equipment is regularly inspected and maintained;
- users/operators are trained and supervised;

For further guidance refer to section 10.1 health and safety policies and procedures  
[https://schoolsweb.buckscc.gov.uk/health-and-safety/health\\_and\\_safety\\_policies/](https://schoolsweb.buckscc.gov.uk/health-and-safety/health_and_safety_policies/)

### **23.5 LIFTS**

Andy Partridge is responsible for ensuring that

- passenger lifts including stair lifts are inspected and serviced every six months;
- the Normal Operating Procedures (NOPs) and Emergency Action Plans (EAPs) for passenger lifts are in place

For further guidance refer to section 10.1 health and safety policies and procedures  
[https://schoolsweb.buckscc.gov.uk/health-and-safety/health\\_and\\_safety\\_policies/](https://schoolsweb.buckscc.gov.uk/health-and-safety/health_and_safety_policies/)

### **23.6 MANUAL HANDLING EQUIPMENT (LOADS)**

This includes equipment used for the manual handling of loads

Andy Partridge, Caretaker is responsible for ensuring that manual handling equipment such as sack barrows; flat-bed, trolleys, pallet trucks etc are maintained in a safe condition

For further guidance refer to section 5.1 health and safety policies and procedures  
[https://schoolsweb.buckscc.gov.uk/health-and-safety/health\\_and\\_safety\\_policies/](https://schoolsweb.buckscc.gov.uk/health-and-safety/health_and_safety_policies/)

### **23.7 MOVING AND HANDLING EQUIPMENT (PEOPLE)**

Andy Partridge, Caretaker is responsible for ensuring that:

- all wheelchairs, standing frames are inspected and serviced annually by a competent person and kept in a safe and hygienic condition when in use
- other special needs equipment is kept in a hygienic condition and good working order;

For further guidance refer to section 5.2 health and safety policies and procedures  
[https://schoolsweb.buckscc.gov.uk/health-and-safety/health\\_and\\_safety\\_policies/](https://schoolsweb.buckscc.gov.uk/health-and-safety/health_and_safety_policies/)

### **23.8 WORKING AT HEIGHT - ACCESS EQUIPMENT**

Andy Partridge, Caretaker has overall responsibility for the selection, inspection, and maintenance of all access equipment, e.g. leaning ladders, stepladders, tower scaffolds, powered access equipment, fall arrest equipment.

Sarah Morgan is responsible for ensuring appropriate training is provided, employees are appropriately supervised and that suitable risk assessments are carried out.

Andy Partridge, Caretaker is responsible for inspecting access equipment and maintaining the Access Equipment Log (Ladder and Step Ladder Log)

For further guidance refer to section 10.2 health and safety policies and procedures  
[https://schoolsweb.buckscc.gov.uk/health-and-safety/health\\_and\\_safety\\_policies/](https://schoolsweb.buckscc.gov.uk/health-and-safety/health_and_safety_policies/)

### **23.9 EQUIPMENT AND MACHINERY IN CURRICULUM AREAS**

#### **23.9.1 ART AND DESIGN EQUIPMENT (CERAMICS)**

Andy Partridge, Caretaker is responsible for ensuring that

- kilns are regularly inspected, maintained and serviced annually;
- local exhaust ventilation systems are serviced and maintained annually;
- faulty equipment is taken out of use and repaired or removed;
- users/operators of equipment are trained and supervised;

#### **23.9.2 DESIGN AND TECHNOLOGY EQUIPMENT *Not Applicable***

is responsible for ensuring that

- design technology equipment is regularly inspected, maintained and serviced annually;
- local exhaust ventilation systems are serviced and maintained annually;
- faulty equipment is taken out of use and repaired or removed;
- users/operators of equipment are trained and supervised;

#### **23.9.3 PHYSICAL EDUCATION EQUIPMENT (PE)**

Andy Partridge and Universal: are responsible for ensuring that

- PE equipment is regularly inspected, maintained and serviced annually by a competent contractor;

- faulty equipment is taken out of use and repaired or removed;
- cleaning schedule for gym and sports hall floors is implemented;

### **23.9.5 STAGE LIGHTING**

Andy Partridge is responsible for ensuring that

- stage lighting equipment is regularly inspected, and portable appliance tested at appropriate intervals by a competent contractor

## **24. SEVERE WEATHER**

Sarah Morgan is responsible for making arrangements to ensure safe access and egress during adverse weather, e.g. snow and ice.

Andy Partridge is responsible for clearing and gritting appropriate pedestrian and vehicle routes on the site.

For further guidance refer to section 9.7 health and safety policies and procedures  
[https://schoolsweb.buckscc.gov.uk/health-and-safety/health\\_and\\_safety\\_policies/](https://schoolsweb.buckscc.gov.uk/health-and-safety/health_and_safety_policies/)

## **25. SITE SAFETY, HOUSE KEEPING AND WASTE MANAGEMENT**

### **25.1 SITE SAFETY**

All employees and governors must report any hazards to Sarah Morgan who will arrange for repairs or action to remove hazard.

### **25.2 LOCATIONS OF MAIN SERVICE ISOLATION POINTS**

The locations of the positions of all main service isolation points are as follows:

Water	Double Gate RAF side in meter manhole Reception class (41) Staff kitchen (40) Dining Hall (4) boxed in far corner
Electricity	Staff kitchen storage area (40) School office (33) Cupboard (6) Cupboards behind stage (31 & 16) Cupboard by burglar alarm in upper school (71)

Science classroom (74)  
Cupboard under the stairs (opposite Room 87)  
Year 5 (93)  
SLT Lobby (77)  
Gas Boiler Room (9)

### **25.3 HOUSEKEEPING**

All staff are responsible for ensuring the good housekeeping of their own workrooms, for example, offices, laboratories, workshops, art studios, drama studios and related storage areas.

### **25.4 CLEANING ARRANGEMENTS**

All members of staff are responsible for clearing up spillages which occur whilst they are in charge of the area concerned. Other spillages, leaks or wet floors should be reported Anthony Rutland who will arrange for them to be cleared.

The school will be cleaned by: Haywards every day at: 4.30 pm. Staff should avoid areas where floors have been wet mopped.

Spill kits are kept in the Medical room.

### **25.5 WASTE MANAGEMENT**

Rubbish awaiting collection must never be left where it obstructs escape routes or could aid the production and spread of fire and smoke.

Anthony Rutland is responsible for arranging safe disposal of hazardous, special and/or clinical waste.

Anthony Rutland is responsible for ensuring

- waste is collected daily and stored in appropriately sited secure containers;
- waste containers are secured in either a compound or by being chained

## **26. SITE SECURITY AND VISITORS**

All visitors must report to Reception where they will be asked to sign in and wear a visitor badge.

Other arrangements to ensure the security of pupils and employees on site are: An employee or

child seeing an unidentified person should act in accordance with agreed procedures.  
Anthony Rutland, Caretaker, is responsible for unlocking and locking the building, arming and disarming security alarms etc.

## 27. SMOKING

Sarah Morgan will ensure that

- all persons coming onto the school site understand that smoking is prohibited including the grounds and in school vehicles;
- no smoking signs are displayed at the entrance to the school;
- information on the no smoking policy is included in the lettings policy.

For further guidance refer to section 8.1 health and safety policies and procedures  
[https://schoolsweb.buckscc.gov.uk/health-and-safety/health\\_and\\_safety\\_policies/](https://schoolsweb.buckscc.gov.uk/health-and-safety/health_and_safety_policies/)

## 28. SUPPORTING PUPILS WITH MEDICAL CONDITIONS

Sarah Morgan is responsible for writing or adopting the County Model Policy for Supporting Pupils with Medical Conditions following the statutory guidance issued by the DfE.

Sarah Morgan is the accountable person for implementing the school's policy on Supporting Pupils with Medical Conditions.

Mandy Carey is responsible for

- keeping a log of pupil's medication;
- ensuring medication remains in date;
- ensuring consent forms are completed

Mandy Carey is responsible for undertaking and reviewing Individual Health Care Plans using the template available in section 8.9.

Mandy Carey is responsible for compiling an inventory of pupils who have been diagnosed with asthma or have been prescribed a salbutamol inhaler

Sarah Morgan is responsible for management of controlled drugs following guidance and documentation

For further guidance refer to section 8.9 health and safety policies and procedures  
[https://schoolsweb.buckscc.gov.uk/health-and-safety/health\\_and\\_safety\\_policies/](https://schoolsweb.buckscc.gov.uk/health-and-safety/health_and_safety_policies/)

## 29. SWIMMING

Sarah Morgan is responsible for school swimming and ensuring staff are appropriately trained

For further guidance refer to section 12.10 health and safety policies and procedures  
[https://schoolsweb.buckscc.gov.uk/health-and-safety/health\\_and\\_safety\\_policies/](https://schoolsweb.buckscc.gov.uk/health-and-safety/health_and_safety_policies/)

## 30. TEAM TEACH

Victoria Willmot is responsible for arranging Team Teach training and monitoring its effectiveness.

## 31. VEHICLES

The Headteacher is responsible, in conjunction with the driver, for ensuring that vehicles kept or hired by the school are operated in accordance with the law and with the County Council policy contained in "*Regulations for the Use of Vehicles 2016*"

The school business manager is responsible for ensuring that all employees who drive for work are covered under an occasional business use motor insurance policy, any employee driving for work is responsible for ensuring that they have a valid driving licence, failure to do so will render the insurance invalid.

For further guidance refer to section 9.12 health and safety policies and procedures  
[https://schoolsweb.buckscc.gov.uk/health-and-safety/health\\_and\\_safety\\_policies/](https://schoolsweb.buckscc.gov.uk/health-and-safety/health_and_safety_policies/)

### 31.1 On-Site Vehicle Movements

The segregation of traffic and pedestrians will be controlled by the following measures:

- Zones marked off to ensure staff/children do not enter an area where moving vehicles.
- All children must be accompanied by an adult when entering car park.
- All deliveries go to the staff car park and deliveries are not accepted at pick up and drop off times.

## 32. WORK EXPERIENCE

Sarah Morgan is responsible for

- co-ordinating work experience placements;
- ensuring risk assessments are completed by the employer;
- ensuring students are visited in their placements;

**33. REVIEW OF POLICY**

This policy will be reviewed annually.